

## • FOR SAFETY & COMFORTABLE USE

In order to use the machine safely and efficiently, please take care of the following points:

### • BASIC RULES OF SIGNAL WORDS ON THIS MANUAL

#### WARNING

To express behavior and/or operation positively prohibited.

If you operate the machine erroneously in disregard of this warning, it may result in an accident in serious injury or death.

#### CAUTION

To express behavior and/or operation positively prohibited.

If you operate the machine erroneously in disregard of this warning, it may result in an accident involving bodily injury or property damage (to materials, business information, etc.)

#### OPERATION

To describe practical procedures of operation of the machine.

Please try to operate the machine physically according to this description, which will help you understand the topic better.

#### REFERENCE

To introduce an additional description and/or relevant information on other pages/manuals, which will help you understand the topic better.

#### TIP

To introduce function and/or usage which is useful and convenient for your operation.

#### [A]

Unless otherwise specified, A character/numeral in brackets indicates input operation of the character/numeral from the keyboard.

(For instance, the above "[A]" expresses input of "A" from keyboard.)

## WARNING!

Do not put your fingers under the cutter device (inside the cutter cover) whenever the machine is operated. Otherwise it would be the cause of cutting off your fingers by the moving cutter device and/or getting cuts with the edge of cutter blade.

Do not mark terminal ID boards under "TUBE" mode. Before starting marking on terminal ID boards, confirm that the machine is operated under "BOARD" mode.

Please note that the cutter device of SP8600 is designed for cutting soft material tubes and our Marker Labels (long type without cuttings) only, but not for terminal ID boards.

Marking terminal ID boards under "TUBE" mode would be the cause of serious injury by cracked-up cutter device, cutter blade, terminal ID boards, etc.

Be sure to use the power supply cord attached as an accessory of the machine.

Use a single AC outlet for exclusive connection of the power supply cord of the machine.

Do not rework, twist, bend or tug the power supply cord.

Such reworked or damaged cord would be the cause of fire.

Do not use a distribution cord for connecting multiple number of equipment to an AC outlet.

Such wiring by using a distribution code would be the cause of overload and fire.

Do not touch the plug of power supply cord with a wet hand to prevent accidents of fire and electric shock.

When the machine is out of order and it is smoking, fuming and/or making unusual noise, stop using the machine and pull out the power plug from an AC outlet immediately. Then contact our local distributor or CTK Corp., Tokyo.

Continuous use of the machine would result in accidents by fire, electric shock, etc.

Be sure to keep all batteries (especially lithium button and coin type) battery out of reach of children. Such type of battery is used with our optional Data card and Font card for SP8600.

In case a battery is swallowed, consult a doctor immediately.

Do not disassemble or rework the machine. If you need to repair the machine, please contact our local distributor or CTK Corp., Tokyo.

Disassembled or reworked machine by an unauthorized person would be the cause of accidents by fire, electric shock, etc.

This equipment is not suitable for use in locations where children are likely to be present.

## ⚠ WARNING!

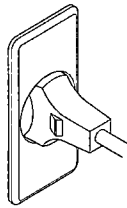
The machine operates within the range of 110-240V AC.

Confirm that the machine is plugged into your AC outlet of the aforesaid voltage range.

If output voltage of your power supply is outside of the aforesaid voltage range or fluctuating a lot, do not connect the machine to its outlet. Supply of an improper or fluctuating voltage to the machine may result in damage to the machine or may invite bodily injury or death.

Connect the grounding conductor of the power supply cord to a grounding terminal properly.

If the machine is ungrounded, the operator would get a shock and/or the machine may malfunction due to discharge of static electricity.



Be sure to use the power supply cord attached as an accessory of the machine.

After turning off the main switch, wait at least 5 seconds before turning it on again.

Also, when pulling out the power plug while the main switch is on, wait at least 5 seconds before plugging it in again.

In order to prevent the thermal head from damages by overheat, do not start marking operation while the thermal head is raised up.

After marking operation is completed, keep the thermal head to its raised position.

All data (your marking texts, customized Table data, etc.) are subject to damage, erasure and loss for a variety of reasons including power failure of the internal back-up battery, machine malfunction, operator error, initialization of internal memory upon repair work, etc.

In no event shall CTK or CTK's distributor be held liable for any loss or damages arising out of the use of, or inability to use of the data stored in the machine.

Therefore it is recommended for the user to establish and implement back-up (duplication) procedures (to duplicate marking data onto an optional data card, to take notes of your customized Table data, etc.)

In order to maintain the safety upon accidental occurrences, be sure to pull out the power supply cord from an AC outlet while the machine is unused for a long period of time (i.e. during summer vacation).

## WARNING!

Do not put your hands/fingers, screw drivers, conductive foreign materials (i.e. screws, washers, wires, paper clips), etc., which would be the cause of injury, fire, electric shock and malfunction of the machine.

Take care not to spill any liquid (water, chemicals, etc.) onto the machine.

In case such spilled liquid runs into the machine, pull out the power supply cord immediately from the AC outlet and contact CTK or CTK's distributor for further action.

If you use the spilled machine continuously, that would be a cause of electric shock and malfunction of the machine.

Before starting marking operation with SP8600, surface of a marked material must be cleaned up.

It becomes not possible to perform clear and legible marking if dust, oil mist, etc cover surface of a marked material.

Before marking terminal ID boards, confirm that the both edges of marking facet is flat without projection.

Plane the projection with a cutter, if any, before marking the board with the machine.

Marking smeared and/or unflat materials would be the cause of damage to the thermal printing head.

Use the machine within the environmental conditions as shown in Manual II "Installation and Maintenance", Section 1.1 "Environmental Conditions for Storage and Use".

When the room temperature is lower than 10 degree Celsius or higher than 30 degree Celsius, tubes might become too hard or too soft to obtain legible marking results.

While stocking tubings and/or terminal ID boards, take care not to leave folds and kinks on the materials.

Folded or kinked part of material may not be marked legibly.

Use materials suitable for marking with SP8600.

Generally PVC materials are suitable for marking with the machine, while marking is not possible on Teflon & silicone tubings and fiberized terminal ID boards.

If you find a material difficult to mark with SP8600, please contact our local distributor or CTK Corp., Tokyo.

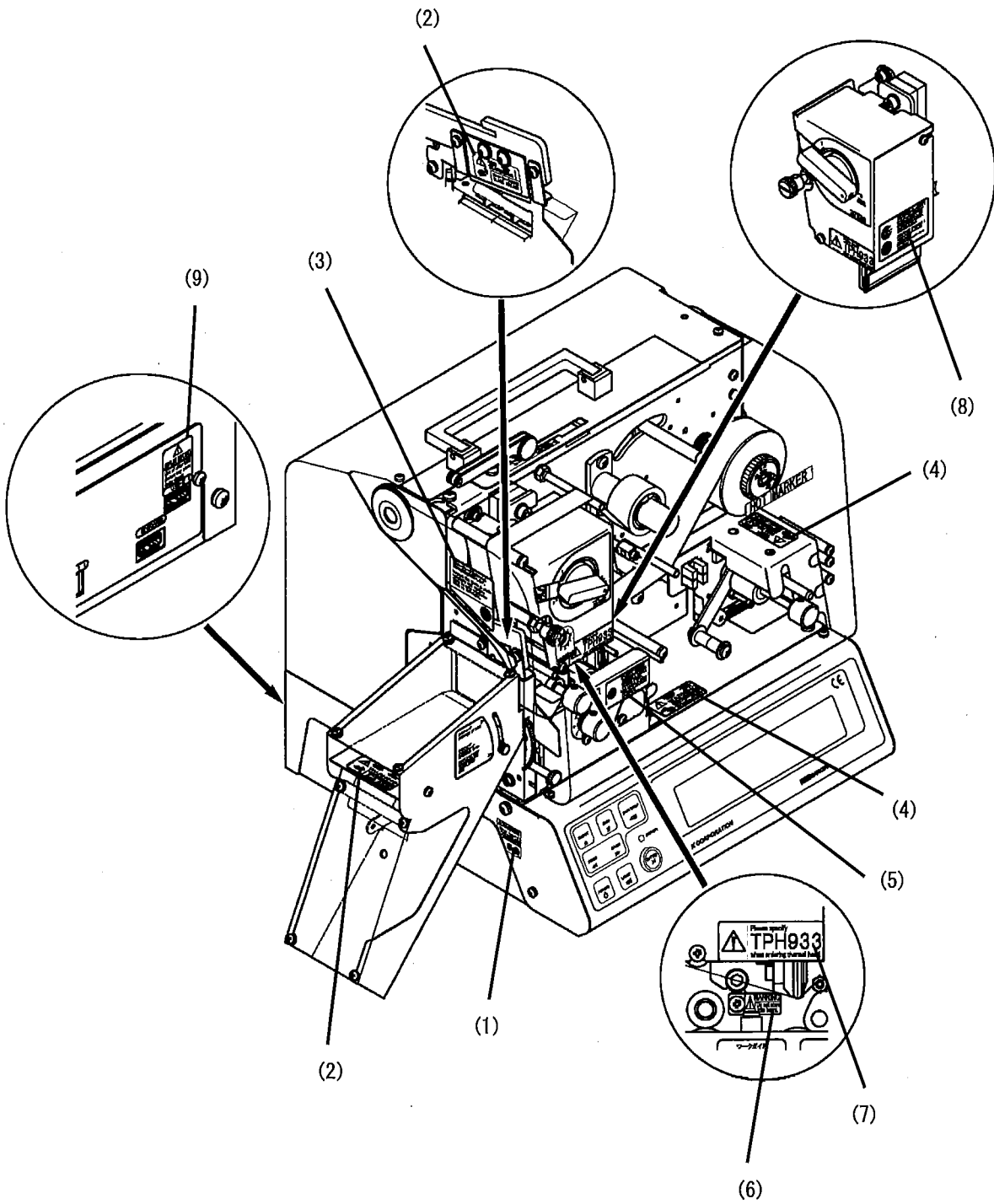
Avoid using the machine in a dusty environment (by a cloud of sand, iron powder, grinding dust, etc.). Such environment would be the cause of damage to the thermal head and malfunction of the machine.

Do not touch the marking facet of thermal head directly. Such behavior would be the cause of burn on your hands/fingers.

During your maintenance work for the machine (i.e. replacement of color foils, marked materials, etc.), pull out the power supply cord from your AC outlet, as there is a possibility to touch the thermal head accidentally during such work.

# • Understanding Machine Safety Labels

The machine safety labels shown in this section are placed in important areas on your machine to draw attention to potential safety hazards.



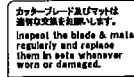
(1)



(2)



(3)



### ● Blade Hazard

The above "Blade Hazard" labels indicate a risk of injury if contacting the blade.

Follow safety instructions in this manual when accessing to the parts where these labels are attached.

(4)



### ● Pinch Point Hazard

This "Pinch Point Hazard" label indicates a risk of injury to hands or fingers to moving parts.

Follow safety instructions in this manual when accessing to the parts where this label is indicated.

(5)



### ● Caution for Label Sensor Adjuster

The label sensor adjuster is installed nearby the above label. Only a qualified person should carry out adjustments according to instructions described in this manual.

(6)



### ● Warning for work guide light

The above label indicates the position of LED illuminator for lighting the work guide.

Do not stare into the illuminator.

(7)



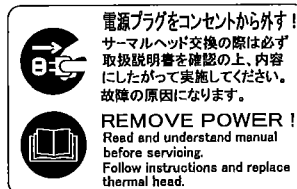
### ● Caution for Thermal Head

The thermal head is installed nearby the above labels.

Use the correct type of thermal head as the replacement.

Only a qualified person should carry out replacement of thermal head according to instructions described in this manual.

(8)



(9)



### ● Caution for USB-2

The USB port #2 is located nearby this label and designed to connect a USB flash drive only.

Do NOT connect anything other than a USB flash drive – PC, external hard drive, alternative device, etc.

## • Explanation of Pictorial Indications

Please read through the following explanation and fully understand the meanings of the pictorial indications shown on the machine and the manuals.

### (a) WARNING / CAUTION



"WARNING" indicates mishandling could lead to a fatal or serious injury accident or death.

"CAUTION" indicates mishandling could lead to an accident involving personal or property damage.

### (b) BLADE HAZARD



This mark / decal indicate failure to this warning could result in severe injury by the blade.

### (c) PINCH POINT HAZARD



This mark / decal indicate failure to this warning could result in severe injury by the rollers or moving parts.

### (d) UNPLUG SIGN



This mandatory mark / decal request you to unplug the machine from a power supply whenever you conduct operations indicated with this mark / decal.

### (e) READ OPERATOR'S MANUAL SIGN



This mandatory mark / decal request you to read through the operator's manuals whenever you conduct operations indicated with this mark / decal.