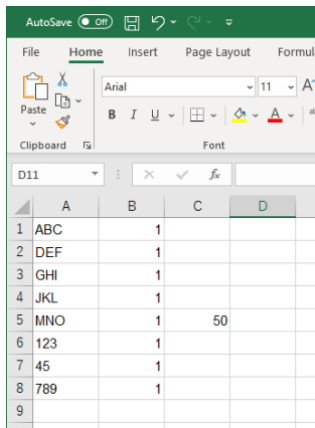


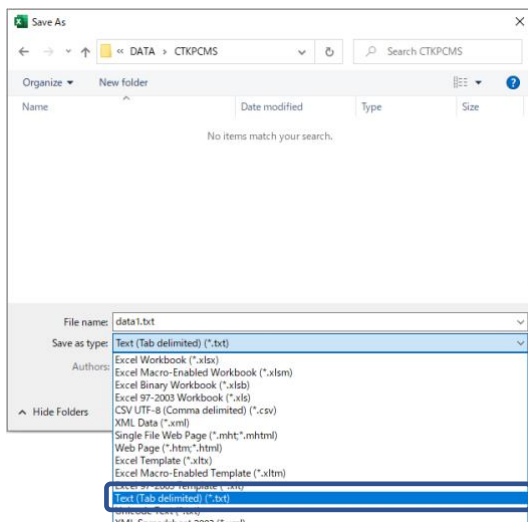
## How to import EXCEL data (when using Windows fonts)

This is a method for importing data created in EXCEL into communication software("CTKPCMS"). All marking data can be created in the same way.

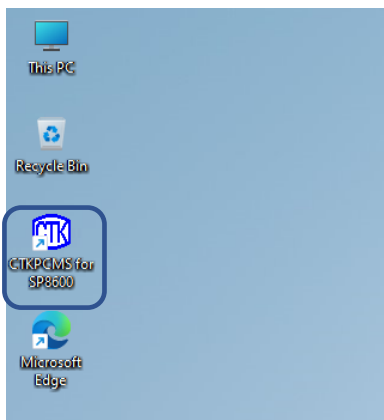


	A	B	C	D
1	ABC		1	
2	DEF		1	
3	GHI		1	
4	JKL		1	
5	MNO	1	50	
6	123		1	
7	45		1	
8	789		1	
9				

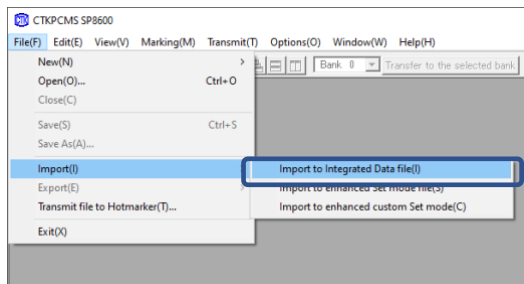
- (1) Open EXCEL, then Enter  
"DATA" into Column A  
"QTY" into Column B  
"NUMBER" into Column C



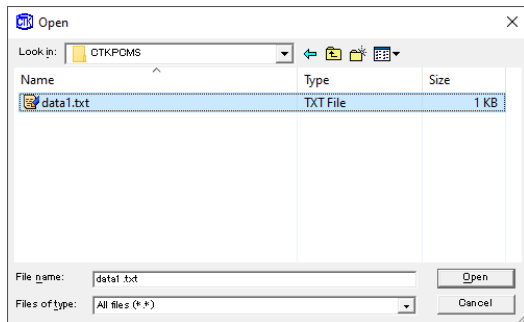
- (2) Go to "File" in menu bar  
→Select Save As
- (3) Select the file type "Text (tab delimited)" and save the file.



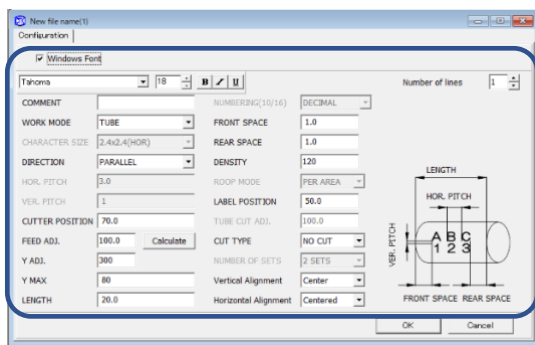
- (4) Launch "PCMS" communication software.



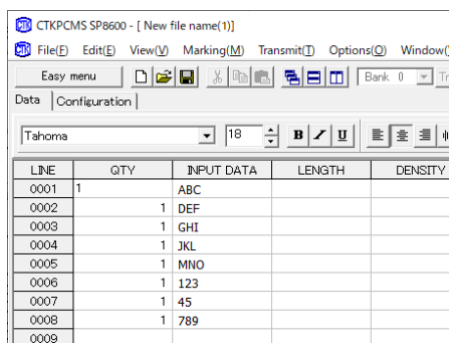
- (5) Go to "File" in menu bar
  - Go to "Import"
  - Go to "Import to Integrated Data file"



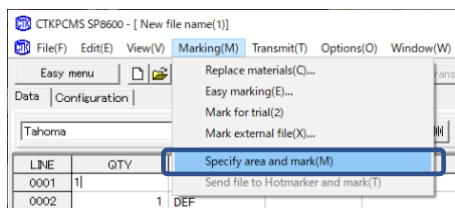
- (6) Change the file type to "All Files" and open the file saved in (3).



- (7) File loading is completed. When using Windows fonts, check the checkbox and enter print setting information.



- (8) The file conversion is now completed.



- (9) After the conversion is completed, select "Marking" from the menu bar and choose "Specify area and mark" when start marking.